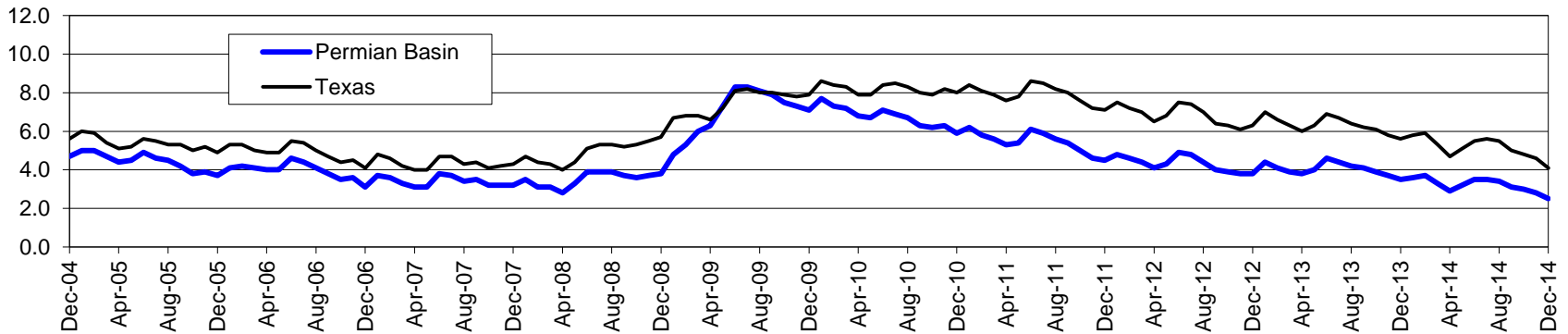


Permian Basin Workforce Development Area*

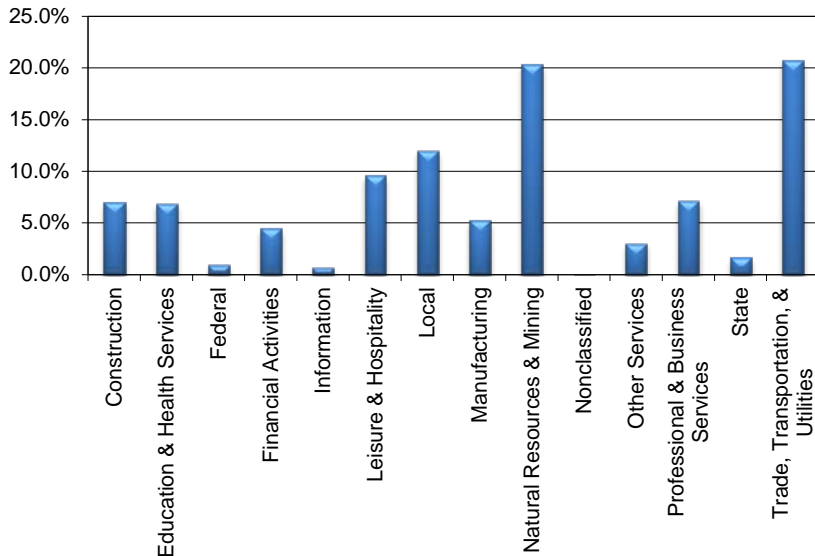
December 2014

Permian Basin WDA					Texas				
	CLF	Employed	Unemployed	Rate		CLF	Employed	Unemployed	Rate
Dec-14	258,343	251,777	6,566	2.5	Dec-14	13,005,442	12,466,775	538,667	4.1
Nov-14	259,576	252,300	7,276	2.8	Nov-14	13,068,856	12,464,326	604,530	4.6
Dec-13	250,910	242,034	8,876	3.5	Dec-13	12,864,202	12,141,677	722,525	5.6

Historical Unemployment Rates



Permian Basin WDA Industry Composition 2nd Quarter 2014



Total WDA Claims

Continued Claims for the Week of the 12th

	Dec-14	Nov-14	Dec-13	OTY
Continued	870	671	999	-129

Texas Unemployment Insurance Claims

Continued Claims for the Week of the 12th

	Dec-14	Nov-14	Dec-13	OTY
Continued	105,335	101,927	124,041	-18,706

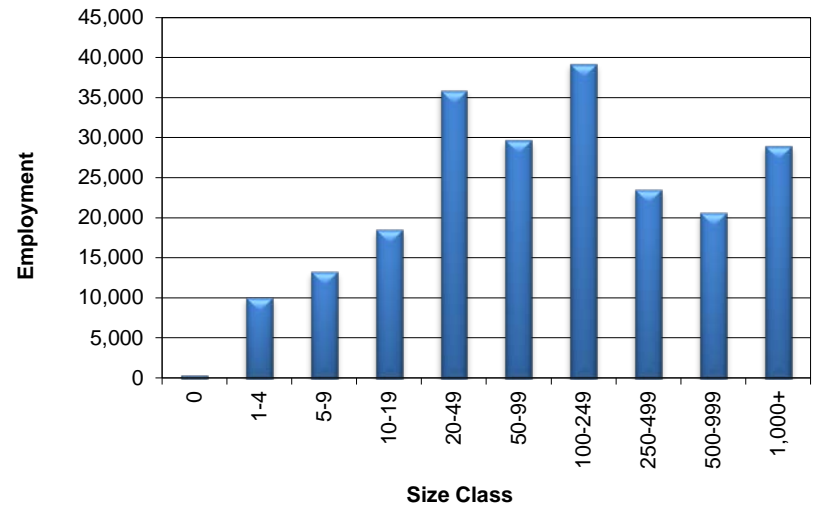
Permian Basin WDA Average Weekly Wage

	Permian Basin	Texas
2nd Quarter 2014	\$1,118.18	\$973.65
1st Quarter 2014	\$1,151.41	\$1,062.26
2nd Quarter 2013	\$1,036.27	\$944.12
Quarter Change	-\$33.23	-\$88.61
OTY Change	\$81.91	\$29.53

NAICS Covered Employment Quarterly Data 2nd Quarter 2014

SUPER SECTOR	Employment	Change	
		Quarter	Year
Construction	15,442	172	670
Education & Health Services	15,282	150	-65
Federal	2,089	4	-43
Financial Activities	9,909	28	637
Information	1,647	33	-156
Leisure & Hospitality	21,206	1,317	1,669
Local	26,490	-168	586
Manufacturing	11,574	263	486
Natural Resources & Mining	44,858	1,948	4,092
Nonclassified	57	10	-7
Other Services	6,813	227	286
Professional & Business Services	15,795	247	1,151
State	3,646	-161	-328
Trade, Transportation, & Utilities	45,677	1,060	1,787
TOTAL	220,485	5,130	10,765

Size Class Employment Composition 2nd Quarter 2014



*Counties in WDA: Andrews, Borden, Crane, Dawson, Ector, Gaines, Glasscock, Howard, Loving, Martin, Midland, Pecos, Reeves, Terrell, Upton, Ward, & Winkler